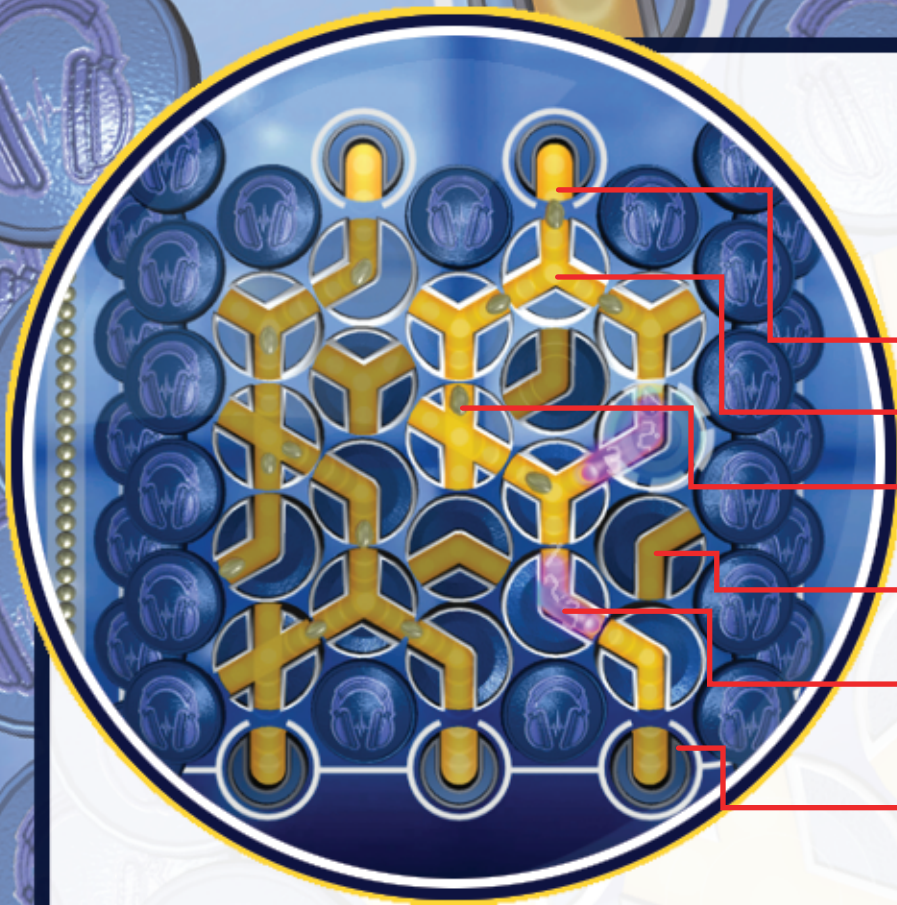


Turn Dials. Make Paths. Save Droplitz!

Play to Unlock New Boards, Themes, and Game Modes!



Dropper

Path

Droplitz

Dial

Bonus Droplitz

Collector



I-Dial



Y-Dial



U-Dial



L-Dial



X-Dial

Your droplitz are stored on the left-hand side of the screen, and release periodically into the board. Rotate Dials to create paths from the Droppers at the top of the screen to the Collectors at the bottom.

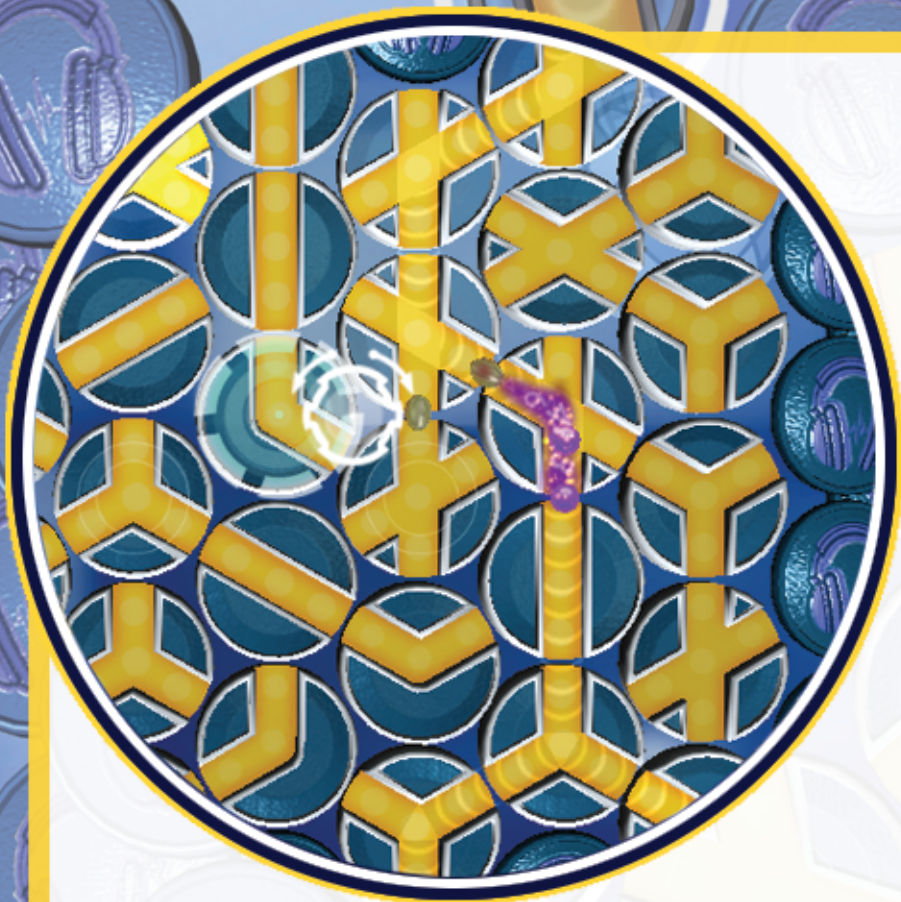
Droplitz are lost whenever they hit a dead end and split whenever they hit a fork. U-Dials work to drop or collect Droplitz depending on their orientation.

Purple Bonus Droplitz are created whenever a path is made. Paths are destroyed when all of the Bonus Droplitz reach the bottom.

With the exception of Zendurance mode, each time the paths are destroyed, you will go up a difficulty level. Every five difficulty levels, a new theme is unlocked.



Droplitz™



Controls

Rotate Left: Z / Left Alt / Left Mouse Button

Rotate Right: X / Spacebar / Right Mouse Button

Fast Forward Bonus Droplitz: Left Shift / Click Fast Forward Icon

Use Power-Up: Left Ctrl / Click the Power-Up Icon

Pause: Esc / Middle Mouse Button

Tips

Your multiplier increases with each complete path that you make. And your multiplier will continue until all Bonus Droplitz have reached a Collector.

If a path is created when new dials fall into place, a “Chain Reaction” is made. Chain reactions cause the Multiplier to be carried over from the previous round (instead of being banked) and can lead to some really high scores.

Keep an eye out for Zen-Dials, which appear in Classic and Zendurance mode. These give you additional points when they are part of a path.



Zen-Dials